

#### FEATURES

- Unencapsulated, stacked, metallized polyphenylene sulfide (PPS) film construction, non-inductive.
- Small sizes in EIA 1913, 2416, 2820 & 2825.
- Wide temperature range (-55°C ~ +125°C).
- Both dip and reflow soldering acceptable.
- Tape & reel package.
- High heat and moisture resistance.
- Stable temperature and frequency.

#### PART NUMBERING

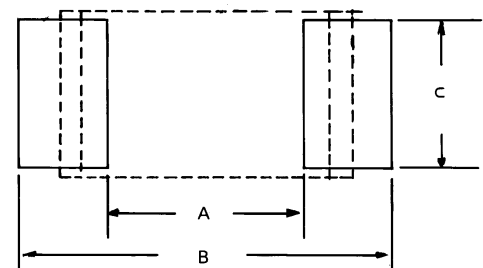
Part Number Example: 933-050/104JTR1913F								
933	-	050	/	104	J	TR	1913	F
Type		Rated DC Voltage		Capacitance Code (pF)*	Tolerance Code	Package Code**	Reel Size	RoHs Compliant
* Capacitance Code: First two digits represent significant figures, third digit represents multiplier (number of zeros).								
** Package Code: TR = Tape & Reel.								

#### SPECIFICATIONS

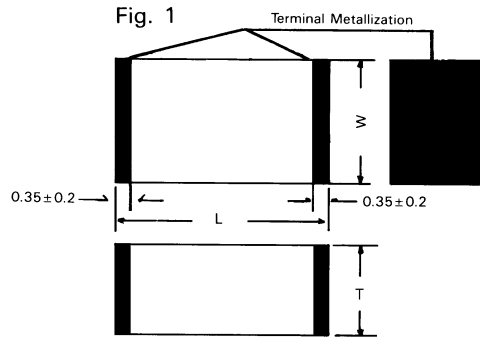
Performance Characteristics	
Operating Temperature Range	-55°C ~ +105°C.
Temperature Characteristics (20°C)	Within ±3% of initial value @ Δ C/C (-55°C). Within ±4% of initial value @ Δ C/C (+105°C).
Voltage Range	100VDC
Withstanding Voltage (between leads)	1.5 times rated voltage for 1 ~ 5 seconds.
Capacitance Range (20°C, 1KHz)	0.01μF ~ 0.22μF.
Capacitance Tolerance	±2% & ±5%.
Maximum Dissipation Factor % (20°C, 1KHz)	0.6.
Minimum Insulation Resistance (20°C) (after 1 minute minimum)	3000MΩ measured @ 100VDC.

#### RECOMMENDED LAND PATTERN DIMENSIONS (mm)

EIA Size	A	B	C
1913	2.6	6.6	3.0
2416	3.8	7.8	3.8
2820	4.5	9.0	4.6
2825	4.5	9.0	5.7



**DIMENSIONS IN mm:**



**EIA SIZE CODE**

EIA Size	T ± 0.2	L ± 0.2	W ± 0.3
1913	1.4	4.8	3.3
	2.0		
	2.4		
	2.8		
2416	1.8	6.0	4.1
	2.0		
	2.4		
	2.8		
	3.2		
2420	2.8*	7.1	5.0
	3.0*		
	3.4*		
2425	3.4*	7.1	6.3
	4.0*		
	4.8*		

**STANDARD PRODUCTS TABLE BY EIA SIZE AND THICKNESS**

Voltage		100WVDC														
EIA size		1913				2416					2420			2425		
Thickness		1.4	2.0	2.4	2.8	1.8	2.0	2.4	2.8	3.2	2.8	3.0	3.4	3.4	4.0	4.8
Capacitance (°F)	0.01	■														
	0.012	■														
	0.015		■													
	0.018			■												
	0.022				■											
	0.027					■										
	0.033						■									
	0.039							■								
	0.047								■							
	0.056									■						
	0.068										■					
	0.052											■				
	0.10												■			
	0.12													■		
	0.15														■	
	0.18															■
	0.22															